



Government of India  
Ministry of Earth Sciences



India Meteorological Department

Dated: 27<sup>th</sup> July, 2025

Time of issue: 1630 hours IST

### Press Release

**Sub: Brief Report on Depression over Northwest Bay of Bengal and adjoining areas during 25<sup>th</sup> -27<sup>th</sup> July**

#### I. Life History:

An upper air cyclonic circulation (remnant of Tropical Cyclone WIPHA) emerged over northeast Bay of Bengal (BoB) and under its influence a Low Pressure area formed over north BoB in the early morning (0530 hrs IST/0000 UTC) and it lay as a well marked low pressure area over the same region in the same evening (1730 hours IST/1200 UTC) of 24<sup>th</sup> July, 2025. It moved slowly west-northwestwards, and concentrated into a Depression over northwest BoB and adjoining areas of coastal West Bengal and Bangladesh in the early morning (0530 hours IST/0000 UTC) of today, the 25<sup>th</sup> July. Continuing to move further west-northwestwards, it crossed West Bengal & adjoining Bangladesh coasts in the morning hours (between 0730-0830 hours IST/0200 and 0300 UTC) on 25<sup>th</sup> July. Thereafter, it moved west-northwestwards till 26<sup>th</sup> July, early morning (0530 hours IST/0000 UTC) & nearly westwards thereafter across Gangetic West Bengal, Jharkhand, North Chhattisgarh & Madhya Pradesh and weakened into a well-marked low pressure area over **northwest Madhya Pradesh and neighbourhood** in the morning (0530 hrs IST/0000 UTC) and persisted over the same region in the morning (0830 hours IST/0300 UTC) of today, the 27<sup>th</sup> July, 2025. Latest satellite imagery is presented in Fig. 1 (Annexure-1). Observed track of the system (depression to depression) is presented in Fig. 2 (Annexure-1).

#### II. Forecast:

It is very likely to continue to move nearly westwards across northwest Madhya Pradesh and weaken gradually into a low pressure area during next 12 hours.

**Warnings** (graphics are given in Fig. 3, Annexure-1):

##### (i) Rainfall Warning:

**Chhattisgarh:** Light to moderate rainfall at most places with **heavy rainfall** at isolated places over north Chhattisgarh on 27<sup>th</sup>-28<sup>th</sup> July.

**East Madhya Pradesh:** Light to moderate rainfall at most places with **heavy rainfall** at isolated places **is very** likely on 27<sup>th</sup> and heavy to very heavy rainfall at isolated places is very likely on 28<sup>th</sup> July.

**West Madhya Pradesh:** Light to moderate rainfall at most places with **heavy to very heavy rainfall** at isolated places **is very** likely during 27<sup>th</sup> – 28<sup>th</sup> July.

**Vidarbha:** Light to moderate rainfall at most places with **heavy rainfall** at isolated places on 27<sup>th</sup> July.

**Madhya Maharashtra:** Light to moderate rainfall at most places with **heavy to very heavy rainfall** at isolated places **is very** likely during 27<sup>th</sup> – 28<sup>th</sup> July.

**Gujarat region:** Light to moderate rainfall at most places with **heavy to very heavy rainfall** at isolated places **is very** likely during 27<sup>th</sup> – 28<sup>th</sup> July with **extremely heavy rainfall ( $\geq 21$  cm)** on 27<sup>th</sup> July.

**Saurashtra and Kutchh:** Light to moderate rainfall at most places with **heavy to very heavy rainfall** at isolated places **is very** likely on 27<sup>th</sup> and heavy rainfall at isolated places is very likely on 28<sup>th</sup> July.

**East Rajasthan:** Light to moderate rainfall at most places with **heavy to extremely heavy rainfall** at isolated places is very likely during 27<sup>th</sup> – 28<sup>th</sup> July.

**West Rajasthan:** Light to moderate rainfall at most places with **heavy rainfall** at isolated places is very likely on 27<sup>th</sup> July.

**(ii) Impact Expected and Action Suggested due to heavy rainfall (Chhattisgarh, Madhya Pradesh, Vidarbha, Madhya Maharashtra, Gujarat and Rajasthan)**

**Impact expected:**

- ❖ Rain may damage plantation, horticulture and standing crops.
- ❖ Partial damage to vulnerable structures due to rain.
- ❖ Minor damage to kutcha houses/walls, huts and roads due to heavy rain.
- ❖ Road and rail traffic may be affected due to heavy rain.
- ❖ There could be localised landslides, mudslides, landslips, water logging, inundation and flooding over low lying areas.
- ❖ Occasional reduction in visibility due to heavy rainfall.
- ❖ Helicopter services may get affected.

**(iii) Action suggested:**

- ❖ People are advised to keep a watch on the weather for worsening conditions and be ready to move to safer places accordingly.
- ❖ Take safe shelters; do not take shelter under trees, as there could be lightning.
- ❖ In case of expected lightning, unplug electrical/ electronic appliances, immediately, get out of water bodies and keep away from all the objects that conduct electricity.
- ❖ Tourism and recreational activities to be regulated.
- ❖ Helicopter services to be regulated.

**III. Monitoring and forecasting:**

India Meteorological Department (IMD) maintained round the clock watch over the north Indian Ocean (NIO) and the system was monitored well in advance since 17<sup>th</sup> July. The system was monitored with the help of available satellite observations from INSAT 3DR and 3DS, polar orbiting satellites, available ships & buoy observations in the region and coastal observations on the day of landfall. Various numerical weather prediction models run by Ministry of Earth Sciences (MoES) institutions, global models and dynamical-statistical models were utilized to predict the genesis,

track, landfall and intensity of the system. A digitized forecasting system of IMD was utilized for analysis and comparison of various models' guidance, decision making process and warning products generation. Regular bulletins and advisories were issued to WMO, WMO/ESCAP, PTC member countries including Bangladesh & Myanmar, national disaster management agencies including National Disaster Management Authority, National Disaster Response Force, Chief Secretaries of West Bengal, Odisha, Jharkhand, Chhattisgarh, Madhya Pradesh, Maharashtra, Rajasthan and Gujarat. Statistics of bulletins issued in this regard is given in Table 1 (Annexure-1).

#### **IV. Genesis, track and intensity forecast:**

The Extended Range Outlook (ERO) issued by India Meteorological Department (IMD) on 17<sup>th</sup> July, likely formation of low-pressure area over north BoB around 24<sup>th</sup>/25<sup>th</sup> July and low probability of its subsequent intensification into a depression around 25<sup>th</sup>/26<sup>th</sup> July. Since 19<sup>th</sup> July (about 5 days ahead), the daily bulletins issued by Regional Specialised Meteorological Centre-Tropical Cyclones, New Delhi and National Weather Forecasting Centre indicated formation of a low-pressure area over north Bay of Bengal around 24<sup>th</sup> July, 2025. The regular bulletin issued on 22<sup>nd</sup> July, indicated emergence of an upper air cyclonic circulation (remnant of cyclone WIPHA) over north BoB with further consolidation into a low pressure area over north BoB around 24<sup>th</sup> July. Subsequently, the ERO issued on 24<sup>th</sup> July, indicated high probability of formation of depression over North BoB around 25<sup>th</sup> July. Since, first bulletin issued on formation of depression on 25<sup>th</sup> July, west-northwestwards movement and no further intensification was indicated. Thus, the genesis, movement, track and intensity of the system were well predicted.

#### **V. 24 hours cumulative realised heavy rainfall ( $\geq 7\text{cm}$ ) in association during life period of this system is presented in Annexure-2.**

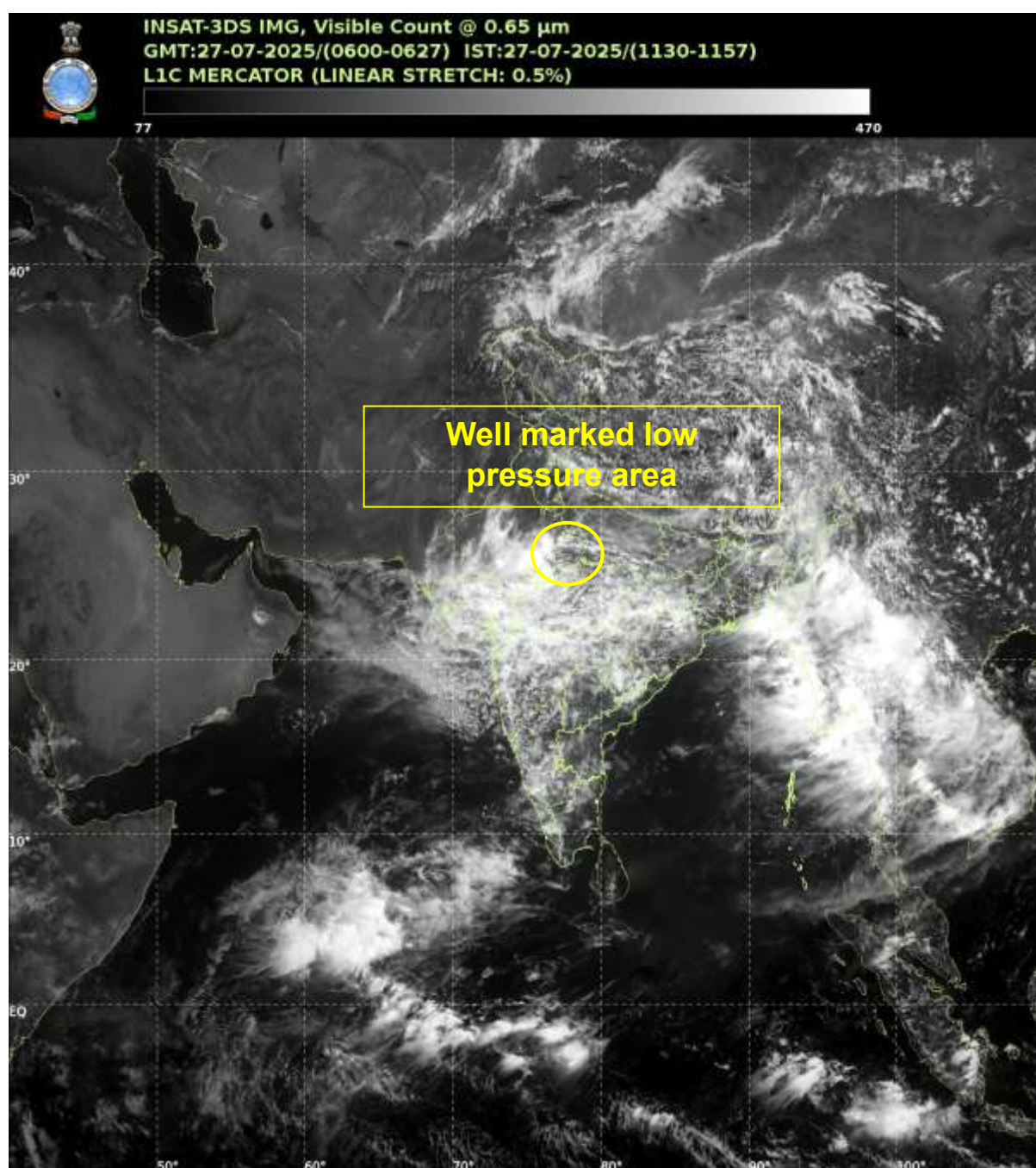
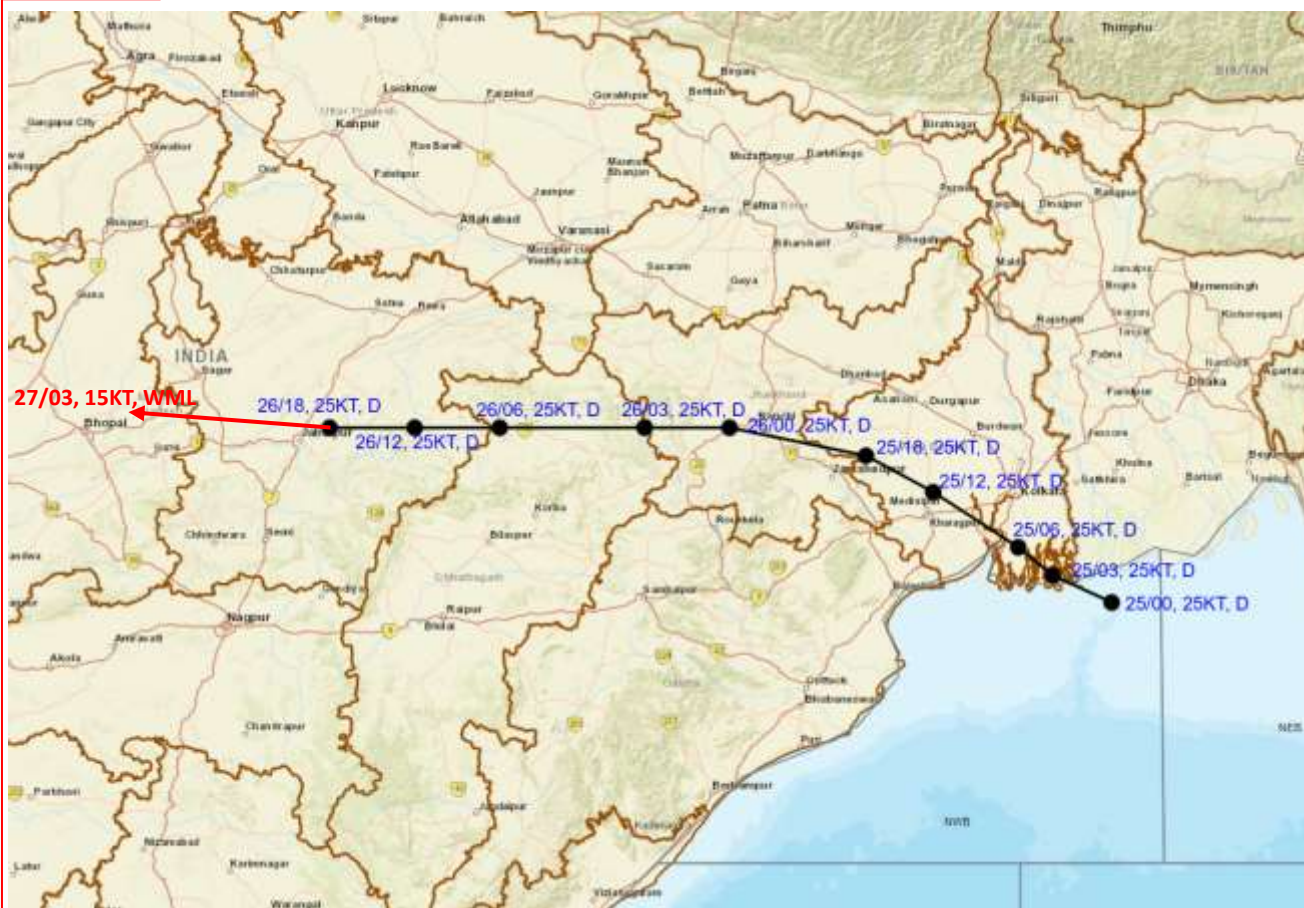


Fig. 1: INSAT 3DS visible imagery at 1130 (0600 UTC) of 27<sup>th</sup> July, 2025





**OBSERVED TRACK OF DEPRESSION OVER NORTH BAY OF BENGAL DURING 25<sup>TH</sup>-27<sup>TH</sup> JULY AND FORECAST TRACK OF IT'S REMNANT WELL MARKED LOW PRESSURE AREA OVER NORTHWEST MADHYA PRADESH AND NEIGHBOURHOOD AT 0830 HRS. IST (0300 UTC) OF 27<sup>TH</sup> JULY 2025**



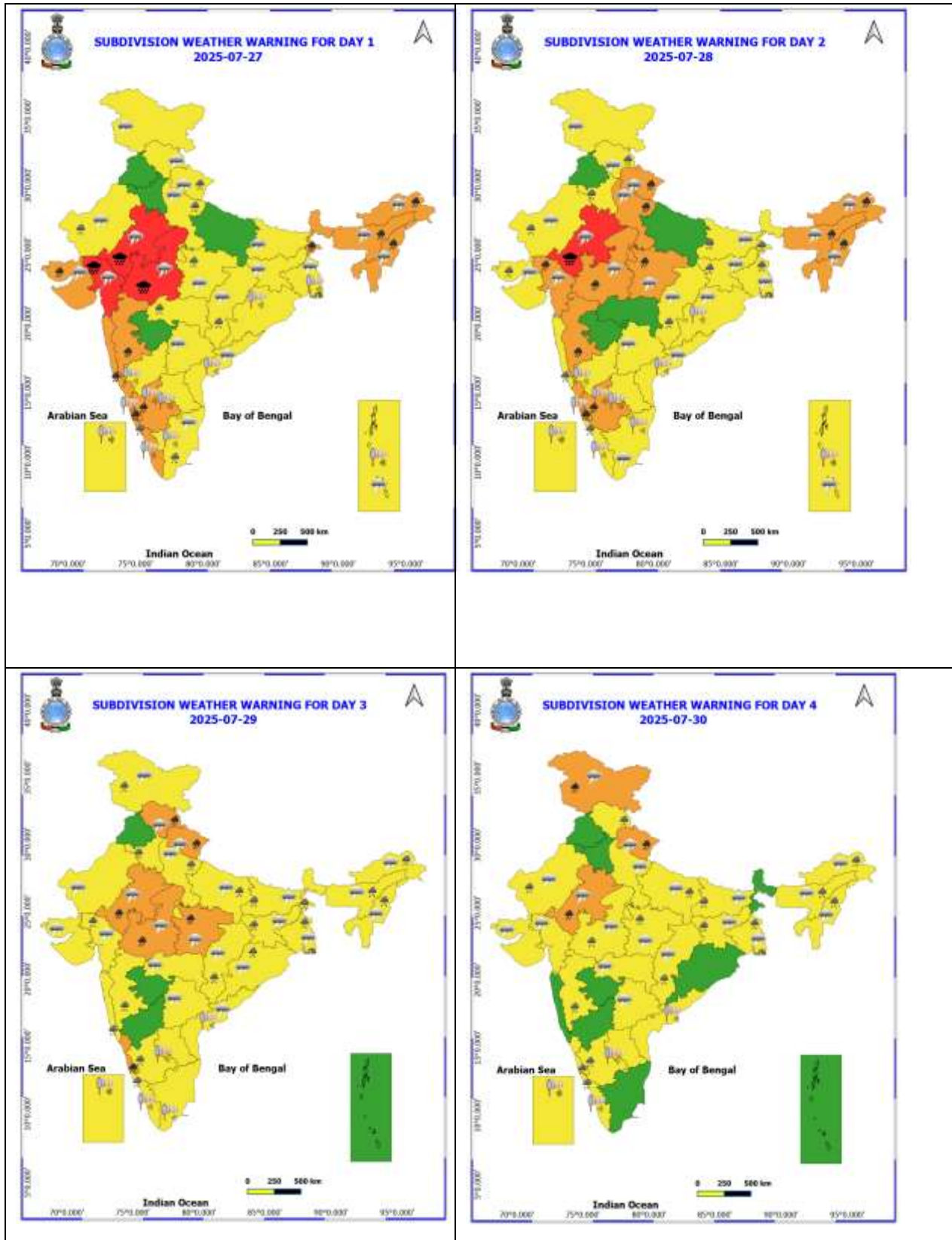
DATE/TIME IN UTC  
IST=UTC + 0530  
L: LOW PRESSURE AREA  
WML: WELL MARKED LOW PRESSURE AREA  
D: DEPRESSION (17-27 KT)  
DD: DEEP DEPRESSION (28-33 KT)  
CS: CYCLONIC STORM (34-47 KT)  
SCS: SEVERE CYCLONIC STORM (48-63 KT)  
VSCS: VERY SEVERE CYCLONIC STORM (64-89 KT)  
ESCS: EXTREMELY SEVERE CYCLONIC STORM (90-119 KT)  
SuCS: SUPER CYCLONIC STORM ( $\geq 120$  KT)

1KT=1.85 KMPH

● LESS THAN 34 KT  
○ 34-47 KT  
○  $\geq 48$  KT  
— OBSERVED TRACK  
— FORECAST TRACK  
▲ CONE OF UNCERTAINTY

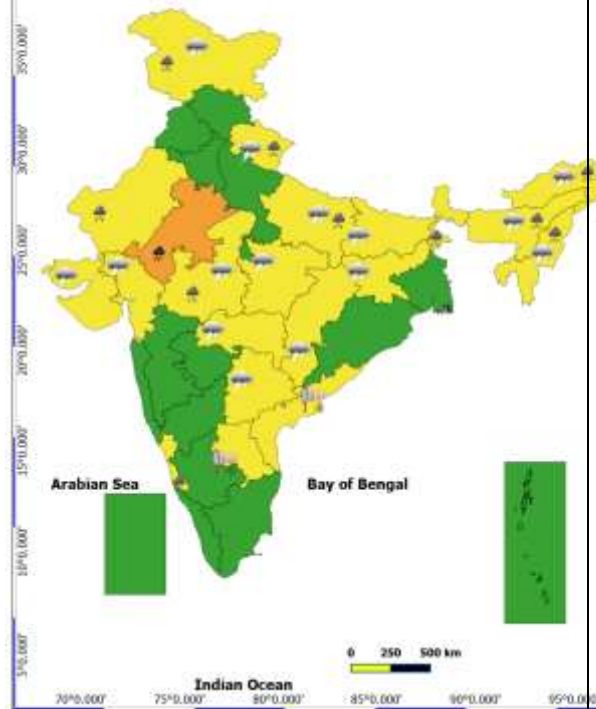
**Fig. 2: Observed track of depression over north Bay of Bengal during 25<sup>th</sup>-27<sup>th</sup> July and forecast track of it's remnant well marked low pressure area over northwest Madhya Pradesh and neighbourhood at 0830 hrs. IST (0300 UTC) of 27<sup>th</sup> July 2025**

Fig. 3: Multi-hazard Warning Graphics

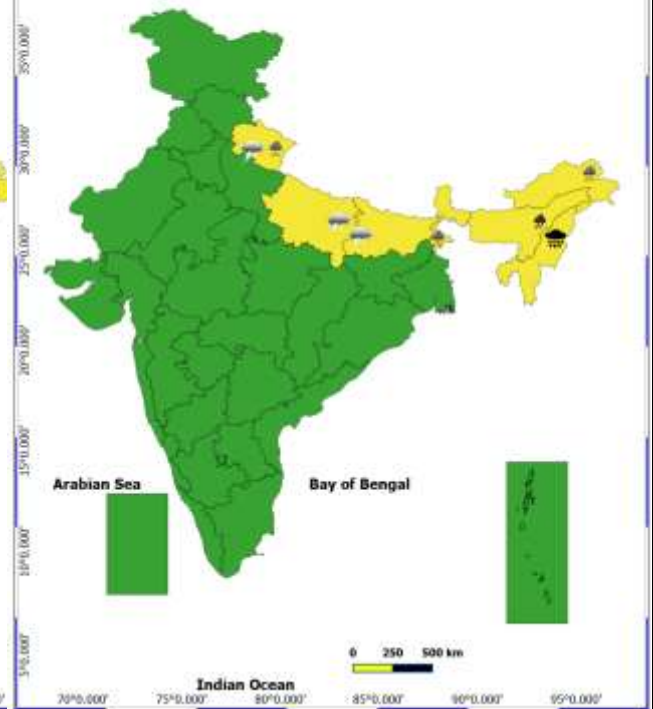




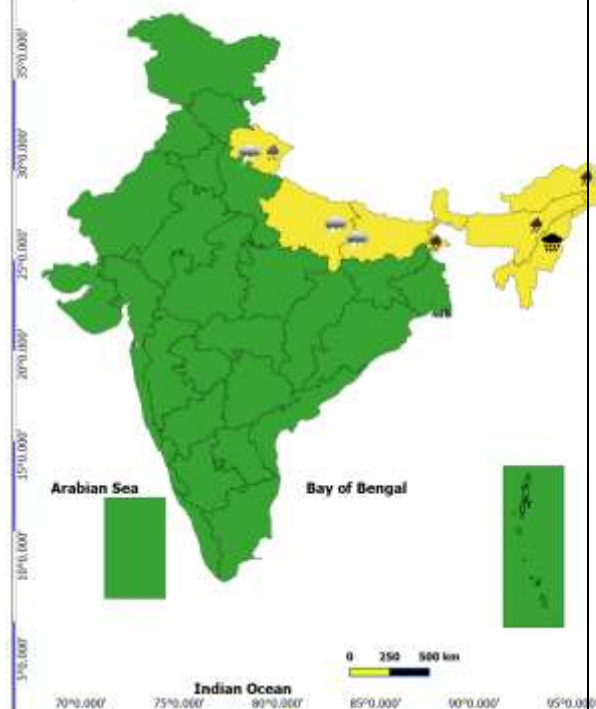
### SUBDIVISION WEATHER WARNING FOR DAY 5 2025-07-31



### SUBDIVISION WEATHER WARNING FOR DAY 6 2025-08-01



### SUBDIVISION WEATHER WARNING FOR DAY 7 2025-08-02



- Fog
- Heavy Rain
- Very Heavy Rain
- Extremely Heavy Rain
- Thunder & Lightning
- Hailstorm
- Dust Raising Winds
- Heavy Snow
- Dust Storm
- Heat Wave
- Warm Night
- Hot Day
- Hot & Humid
- Strong Surface Winds
- Cold Wave
- Cold Day
- Ground Frost

#### CLOUR CODES WARNINGS

No Warning (No Action)	Green
Watch (Be Aware)	Yellow
Alert (Be Prepared To Take Action)	Orange
Warning (Take Action)	Red

#### Probabilistic Forecast

Terms	Probability of Occurrence (%)
Unlikely	0-20
Likely	21-39
Very Likely	40-79
Most Likely	80-100

\*Red colour warning does not mean "Red Alert", Red colour warning means "Take Action".  
Forecast and Warning for any day is valid from 08:30 hours IST of day till 08:30 hours IST of next day.  
For more details, kindly visit <https://www.imd.gov.in> or contact: 911 2434-4599  
(Service to the Nation since 1875)

**Table1: Statistics of bulletins issued**

S. No.	Bulletin type	No. Of Bulletins	Issued to
1	National Bulletin	11	1. IMD's website, RSMC New Delhi website 2. FAX and e-mail to Control Room Ministry of Home Affairs & National Disaster Management Authority, Cabinet Secretariat, Minister of Science & Technology, Secretary MOES, Headquarter Integrated Defense Staff, Director General Doordarshan, All India Radio, PIB MOES, UNI, DG National Disaster Response Force, Director, Punctuality, Indian Railways, Chief Secretary: Government of Odisha, West Bengal, Bihar, Jharkhand, Chhattisgarh, Madhya Pradesh, Maharashtra, Uttar Pradesh, Gujarat and Rajasthan
2	RSMC Bulletin	5	1. IMD's website 2. WMO/ESCAP member countries through GTS and E-mail.
3	GMDSS Bulletins	4	1. IMD website, RSMC New Delhi website 2. Transmitted through WMO Information System (WIS) to Joint WMO/IOC Technical Commission for Ocean and Marine Meteorology (JCOMM)
4	Warnings through SMS	Frequently	SMS to disaster managers at national level and concerned states (every time when there was change in track, intensity and landfall characteristics) (i) 22,999 to General Public by IMD Headquarters
5	Warnings through Social Media	Daily	Cyclone Warnings were uploaded on Social networking sites (Facebook and Tweeter) since inception to weakening of system (every time when there was change in track, intensity and landfall characteristics).
6	Press Briefings	Daily	Regular briefing daily



## Annexure-2

**24 hours cumulative realised heavy rainfall ( $\geq 7\text{cm}$ ) in association during life period of this system is presented below:**

### **25.07.2025 / 0830**

**Odisha:** Kotpad (Koraput) 13, Chitrakunda K Guma (Malkangiri) 12, Kuchinda (Sambalpur) 11, Hatadihi (Keonjhar) 11, Lephripara (Sundargarh) 11, Banaigarh (Sundargarh) 10, Bonth (Bhadrak) 10, Agalpur (Bolangir) 10, Pallahara (Angul) 10, Malkangiri (Malkangiri) 9, Tensa (Sundargarh) 9, Telkoi (dist Keonjhar) 9, Sundargarh (Sundargarh) 9, Kirmira (Jharsuguda) 9, Khairamal (dist Boudhgarh) 9, Tiring (Mayurbhanj) 9, Lathikata (Sundargarh) 9, Salebhatta (dist Bolangir) 8, Soro (Balasore) 8, Ullunda (Sonepur) 8, Gurundia (Sundargarh) 8, Korukunda (Malkangiri) 7, Tangarpali (Sundargarh) 7, Jhumpura (Keonjhar) 7, Mathili (Malkangiri) 7,

**East Madhya Pradesh:** Mada (Singrauli) 18; Patharia (Damoh) 9; Orchha (Niwari), Kesli (Sagar), Bina (Sagar) 8 Each; Patan (Jabalpur), Rahatgarh (Sagar) 7 Each;

**Chhattisgarh:** Raghunath Nagar (Balrampur), Mukdega (Raigarh) 15 Each; Sukma (Sukma), Barpali (Korba) 14 Each; Poudi Uparora (Korba), Bade Bacheli (Dantewada) 13 Each; Biarpur (Surajpur), Kutaru (Bijapur) 12 Each; Dantewara (Dantewada), Janjgir (Janjgir), Wandrafagarh (Balrampur), Seovrinayan (Janjgir), Baloda (Janjgir), Dharamjagarh (Raigarh), Doura Kochali (Balrampur), Pasaan (Korba), Bhothiya (Sakti) 10 Each; Champa (Janjgir), Bijapur (Bijapur), Bilaigarh (Sarangarh Bilaigarh), Darbha (Bastar), Bhairamgarh (Bijapur), Orcha (Narayanpur), Navagarh (Janjgir), Bamhndih (Janjgir) 9 Each; Balrampur (Balrampur), Kuakonda (Dantewada), Pamgarh (Janjgir), Jaijaipur (Sakti), Baramkela (Sarangarh Bilaigarh), Chhindgarh (Sukma), Bhaisma (Korba), Saragaon (Janjgir), Pondi Bachra (Koriya), Bhatgaon (Sarangarh Bilaigarh), Adbhar (Sakti), Chhotedongar (Narayanpur), Gangalur (Bijapur) 8 Each; Sakti (Sakti), Katghora (Korba), Manendragarh (Manendragarh Bharatpur), Gharghoda (Raigarh), Sarangarh (Sarangarh Bilaigarh), Lohandiguda (Bastar), Bastanar (Bastar), Marwahi (Gaurela Pendra Marwahi), Akaltara (Janjgir), Gidhori Tundra (Baloda Bazar), Kukdur (Kabirdham) 7 Each;

**Gangetic West Bengal:** Mo Saltlake (North 24 Parganas) 13; Alipore (Kolkata) 8; Dum Dum (North 24 Parganas) 7;

**Vidarbha:** Bhamragad (Gadchiroli) 11; Ballarpur (Chandrapur), Ahiri (Gadchiroli) 8 Each; Armori (Gadchiroli), Etapalli (Gadchiroli) 7 Each;

### **26<sup>th</sup> July 2025**

**Madhya Maharashtra:** Mahabaleshwar- Imd Obsy (Satara) 26, Lonavala\_agri (Pune) 18, Radhanagari (Kolhapur) 15, Ozharkheda - (Nashik) 14, Harsul - (Nashik) 11, Shahuwadi (Kolhapur) 10, Igatpuri (Nashik) 10, Chandgad (Kolhapur) 8, Trimbakshwar (Nashik) 8, Girnadam - (Nashik) 7;

**Chhattisgarh:** Kusmi (Balrampur) 20, Samari (Balrampur) 14, Labhandih (Raipur) 13, Raipur (Raipur) 13, Dongargarh (Rajnandgaon) 13, Pratappur (Surajpur) 13, Balrampur (Balrampur) 12, Raipur City (Raipur) 12, Mukdega (Raigarh) 11, Odagi (Surajpur) 11, Mana-raipur-ap (Raipur) 10, Doura Kochali (Balrampur) 10, Ahiwara (Durg) 9, Pithora (Mahasamund) 9, Tongpaal (Sukma) 9, Chando (Balrampur) 9, Pondi Bachra (Koriya) 9, Bade Bacheli (Dantewada) 9, Kunkuri (Jashpur) 9, Baloda Bazar (Baloda Bazar) 9, Mandir Hasoud (Raipur) 8, Bhilai (Durg) 8, Arang (Raipur) 8, Belargaon (Dhamtari) 7, Shankargarh

(Balrampur) 7, Ramanujnagar (Surajpur) 7, Bilha (Bilaspur) 7, Marwahi (Gaurela Pendra Marwahi) 7, Bhaiyathan (Surajpur) 7, Mahasamund (Mahasamund) 7, Charama (Kanker) 7, Raigarh (Raigarh) 7, Ratanpur (Bilaspur) 7, Rajnandgaon (Rajnandgaon) 7;

**Jharkhand:** Ghatsila (East Singbhum), Manjhari (West Singbhum) 19 Each; Kuru (Lohardaga), Majhgaon (West Singbhum), Tantnagar (West Singbhum), Hatgamharia (West Singbhum) 12 Each; Mandar (Ranchi) 11; Chaibasa (West Singbhum), Chandil (Seraikela-kharsawan), Arki (Khunti), Goikera (West Singbhum), Musabani (East Singbhum), Saryu (Latehar), Sisai (Gumla) 10 Each; Latehar Balumat Kvk AWS (Latehar), Gudri (West Singbhum), Sonua (West Singbhum), Kumardungi (West Singbhum), Garu (Latehar) 9 Each; Jamshedpur (East Singbhum), Diyakel Khunti Kvk AWS (Khunti) 8 Each; Latehar (Latehar), Kalebira (Simdega), Jamshedpur AP (East Singbhum), Kharsema (Seraikela-kharsawan), Simdega (Simdega), Gumla (Gumla), Anandpur (West Singbhum), Dhalbhumgarh (East Singbhum), Gurabandha (East Singbhum), Bharno (Gumla) 7 Each;

**Odisha:** Muruda (Mayurbhanj) 18, Bahalda (Mayurbhanj) 17, Baripada (Mayurbhanj) 16, Jamda (Mayurbhanj) 16, Suliapada (Mayurbhanj) 14, Kusumi (Mayurbhanj) 13, Tensa (Sundargarh) 13, Gudvela (Bolangir) 13, Tiring (Mayurbhanj) 12, Raruana (Mayurbhanj) 12, Kaptipada (Mayurbhanj) 12, Sukruli (Mayurbhanj) 11, Rasagovindapur (Mayurbhanj) 10, Jharbandh (Bargarh) 10, Rairangpur (Mayurbhanj) 10, Samakhunta (Mayurbhanj) 10, Champua (Keonjhar) 10, Saintala (Bolangir) 9, Karanjia (Mayurbhanj) 9, Joda (Keonjhar) 9, Bijatala (Mayurbhanj) 9, Balimundali (Mayurbhanj) 9, Betanati (Mayurbhanj) 9, Paikmal (Bargarh) 8, Swam-patna (Keonjhar) 8, Balisankara (Sundargarh) 7, Jhumpura (Keonjhar) 7, Nawana (Mayurbhanj) 7, Chandua Kuliana (Mayurbhanj) 7, Kantamal (Boudhgarh) 7, Laikera (Jharsuguda) 7, Sharpada (Keonjhar) 7;

**East Madhya Pradesh:** Bajag (Dindori) 18, Gadarwara (Narsinghpur) 14, Mawai (Mandla) 14, Sidhi (Gopadbanas) (Sidhi) 13, Singrauli-aws (Singrauli) 12, Kotma (Anuppur) 11, Baldevgarh (Tikamgarh) 11, Lanji (Balaghat) 11, Pushprajgarh (Anuppur) 11, Lalburra (Balaghat) 9, Rithi (Katni) 9, Jaitpur (Shahdol) 9, Mehadwani (Dindori) 8, Venkatnagar (Anuppur) 8, Khargapur (Tikamgarh) 8, Harrai (Chindwara) 8, Orchha (Niwari) 7, Mohgaon (Mandla) 7, Sarai (Singrauli) 7;

**Gujarat Region:** Kaprada (Valsad) 17, Silvassa (Dadara & Nagar Haveli) 15, Vapi (Valsad) 13, Madhbun (Dadara & Nagar Haveli) 11, Khanvel (Dadara & Nagar Haveli) 9, Nanipalson (Valsad) 8, Daman\_aws (Daman) 8;

**East Rajasthan:** Dausa (Dausa) 16, Bayana (Bharatpur) 10, Chothkabarwara Sr (Sawai Madhopur) 8, Sarmathura Sr (Dholpur) 8, Anta Sr (Baran) 7, Udaipur-wati (Jhunjhunu) 7, Bassi (Jaipur) 7;

**West Madhya Pradesh:** Udaipura (Raisen) 16, Biaora (Rajgarh) 14, Badi (Raisen) 14, Pipariya (Narmadapuram) 11, Sohagpur (Narmadapuram) 10, Satwas (Dewas) 9, Panchmarhi (Narmadapuram) 9, Kumbhraj (Guna) 9, Mehgaon (Bhind) 9, Bareli (Raisen) 9, Goharganj (Raisen) 9, Bairad (Shivpuri) 9, Gwalior (Gwalior) 8, Sultanpur (Raisen) 8, Chachoda (Guna) 8, Narwar (Shivpuri) 7, Budhni (Sehore) 7;

**Vidarbha:** Armori (Gadchiroli) 9, Gadchiroli (Gadchiroli) 9, Desaiganj (Gadchiroli) 9, Salekasa (Gondia) 8, Gondia Ap (Gondia) 8, Dhanora (Gadchiroli) 8, Gondia (Gondia) 8, Amgaon (Gondia) 7, Kurkheda (Gadchiroli) 7, Nagbhir (Chandrapur) 7, Saoli (Chandrapur) 7, Chikhaldia (Amraoti) 7;

**Gangetic West Bengal:** Midnapore (West Midnapore) 9, Mohanpur (West Midnapore) 9, Midnapore(cwc) (West Midnapore) 9, Amta (Howrah) 7, Dum Dum (North 24 Parganas) 7, Canning (South 24 Parganas) 7, Uluberia (Howrah) 7;

**27<sup>th</sup> July 2025:**

**Chhattisgarh:** Bhanupratappur (dist Kanker) 10; Bade Bacheli (dist Dantewada) 9; Aundhi (dist Mohala Manpur Chowki) 7 each;

**West Uttar Pradesh:** Mahroni (dist Lalitpur) 8;

**Vidarbha:** Kurkheda (dist Gadchiroli), Gondia (dist Gondia), Armori (dist Gadchiroli) 8 Each; Dhanora (dist Gadchiroli), Korchi (dist Gadchiroli) 7 each;

**East Madhya Pradesh:** Pushprajgarh (dist Anuppur) 22; Dindori-aws (dist Dindori) 10; Waraseoni (dist Balaghat) 9; Balaghat-aws (dist Balaghat), Niwari (dist Niwari), Matiyari (dist Mandla) 8 Each; Nainpur (dist Mandla), Nagode (dist Satna), Bajag (dist Dindori), Palera (dist Tikamgarh), Prithvipur (dist Niwari), Sohawal (dist Satna), Gaurihar (dist Chhatarpur) 7 each

**Madhya Maharashtra:** Mahabaleshwar (dist Satara) 20; Lonavala ARG (dist Pune) 15; Radhanagari (dist Kolhapur), Gaganbawada (dist Kolhapur) 13 Each; Igatpuri (dist Nashik) 11; Peth (dist Nashik) 9; Chandgad (dist Kolhapur), Harsul - (dist Nashik) 8 each;

**West Madhya Pradesh:** Sailana (dist Ratlam) 17; Jhabua-aws (dist Jhabua), Agar (dist Agar-malwa) 13 Each; Shivpuri (dist Shivpuri) 12; Ratlam-aws (dist Ratlam), Tarana (dist Ujjain), Kumbhraj (dist Guna) 11 Each; Datia-aws (dist Datia), Dhar-aws (dist Dhar) 10 Each; Badnawar (dist Dhar), Sardarpur (dist Dhar), Petlawad (dist Jhabua), Bhimpur (dist Betul), Badarwas (dist Shivpuri) 9 Each; Atner (dist Betul), Makdone (dist Ujjain) 8 Each; Chicholi (dist Betul), Chanderi (dist Ashoknagar), Depalpur (dist Indore), Barwaha (dist Khargone), Bareli (dist Raisen), Jaora (dist Ratlam), Rama (dist Jhabua), Piploda (dist Ratlam), Narwar (dist Shivpuri), Barod (dist Agar-malwa), Tal (dist Ratlam) 7 each;

**Gujarat Region:** Vadgam (dist Banaskantha) 23; Dharoi Colony (dist Mehsana) 18; Kathalal (dist Kheda), Siddhpur (dist Patan) 17 Each; Modasa (dist Aravalli) 16; Kaprada (dist Valsad), Talod (dist Sabarkantha) 13 Each; Dharampur (dist Valsad), Mahemdavad (dist Kheda), Dahegam (dist Gandhinagar) 12 Each; Satlasana (dist Mehsana), Lunawada (dist Mahisagar), Palanpur (dist Banaskantha), Mahesana (dist Mehsana) 10 Each; Prantij (dist Sabarkantha), Wanakbori (dist Mahisagar), Deesa (dist Banaskantha), Mahudha (dist Kheda), Bayad ARG (dist Aravalli), Dhansura (dist Aravalli), Visnagar (dist Mehsana) 9 Each; Virpur (dist Mahisagar), Vadnagar (dist Mehsana), Bhiloda (dist Aravalli), Balasinor (dist Mahisagar), Patan AWS (dist Patan), Bayad (dist Aravalli), Waghai (dist Dangs), Fatepura (dist Dahod), Dang Kvk AWS (dist Dangs), Dantiwada (dist Banaskantha) 8 Each; Kheralu (dist Mehsana), Vadali (dist Sabarkantha), Dholka ARG (dist Ahmedabad), Kadana (dist Mahisagar), Dhanera (dist Banaskantha), Himatanagar (dist Sabarkantha), Dantewada AWS (dist Banaskantha), Dangs (ahwa) (dist Dangs) 7 each;

**East Rajasthan:** Khushalgarh (dist Banswara) 14; Sajjangarh SR (dist Banswara) 11; Sarmathura SR (dist Dholpur) 10; Chothkabarwara SR (dist Sawai Madhopur), Nasirabad (dist Ajmer) 9 Each; Shergarh SR (dist Banswara), Bhungra SR (dist Banswara), Sallopat SR (dist Banswara), Bari (dist Dholpur), Jagpura SR (dist Banswara), Reodar SR (dist Sirohi) 8 Each; Sapau SR (dist Dholpur), Srinagar SR (dist Ajmer), Sapotra (dist Karauli), Nithuwa SR (dist Dungarpur), Kekri SR (dist Ajmer), Arnod SR (dist Pratapgarh), Kishanganj (dist Baran) 7 each;

**West Rajasthan:** Raipur SR (dist Pali), Jaitran (dist Pali) 7 each